

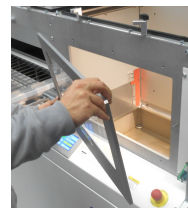
Economy Reflow Vapour Phase Soldering Oven

The environmentally friendly SV540 is a fully operational stand-alone reflow vapour phase soldering machine. This entry system is a manual front loader, including two chambers with low fluid consumption. Very easy to use in which the heat is transferred by condensing vapour. The system is compliant for profiling with standardized manufacturing specifications without the necessity of program or parameter set-up. Thanks to the low soldering temperature and homogeneous heat transfer, the thermal stress on soldering assemblies is kept at the minimum. Its small footprint makes this machine ideal for development, prototyping, small series production and includes standard soldering profiles. Soldering is possible regardless of assembly weight.

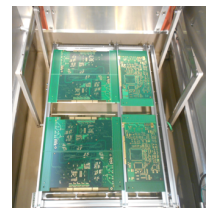


Features:

- Oxygen free soldering without overheating of components
- Patented maintenance and vibration free transport system
- Patented automatic or time-controlled soldering process
- Fluid level monitoring
- Global bottom cooling
- 5" HMI touch display
- Program storage including standard soldering programs
- Illuminated observation window into the solder chamber
- SD slot for storing of profiles and machine data
- Simple access for maintenance
- Fluid filter system
- Exhaust connection
- Cool handling – transport system in cool area



Easy access for maintenance



Assembly in process chamber

Options:

- Adapter for double sided PCBs
- Stainless steel grid
- Measurement channel for thermal profiling
- Signal light tower
- ReSy – a device for repair of QFPs and BGAs
- External cooling device with automatic standby control

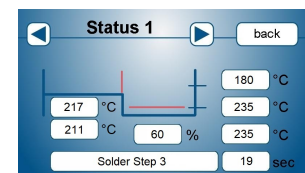
Technical data:

Width	1450 mm (57.09")
Depth	800 mm (31.50")
Height	1400 mm (55.19")
Weight	340 kg (lbs)
Max. PCB size	540 x 360 x 85 mm (21.26 x 41.17 x 3.35")
Max. load on single carrier	3 kg (6.61 lbs)
Liquid agent filling	13 kg (28.66 lbs)
Water connection	1/2" / 2,5-5 bar
Max. heating capacity	5,2 kW
Average power consumption	2,8 kW/h
Power supply	400/230 VAC, 50/60 Hz
Main fuse	16A „gl“ or „C“

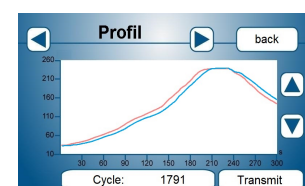
Specifications subject to change without prior notice



Main menu



Online temperature monitoring



Online profile recording

D1E11-SV540-E-210301